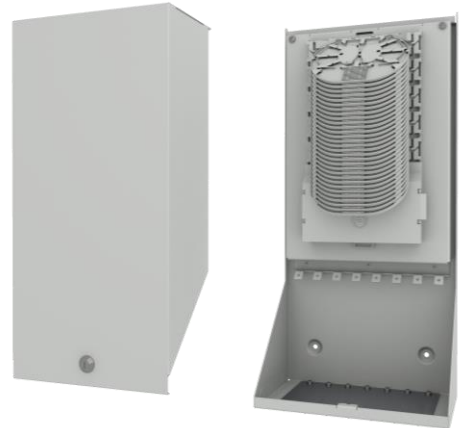


## Customer Outlet Box 2LINE COB S

The 2LINE COB is a wall-mounted distributor that combines the function of a network distributor with the possibility of using patch panels.

The 2LINE COB is available as a splice-through solution or as a splice-patch solution. Because of the different sizes and the modular construction, a wide range of requirements can be realised and can be implemented according to customer requirements



Technical data	
Dimensions HxWxD [mm]	540x265x160
Material	Galvanised steel, plastic
Colour	RAL7035
Closure	Cover with lock
Protection class	IP54

### Areas of application

- As a wall-mounted distributor in buildings or small control cabinets

## Advantages

Variable expansion for splicing and/or patching  
Installation of the patented 2LINE E&MMS cassette system  
Possibility to install splitters  
Loose tube overlength storage and cable loop

## Scope of delivery

- 1 pc. 2LINE COB S

## Optional accessories

- Couplings and pigtails
- Cable bushings (Ø1.5 - 35mm)
- Splice cassettes (crimp or shrink splice protection)
- Cassettes with PLC splitters
- Patch panel for max. 24 couplings
- ZEA (central interception element)